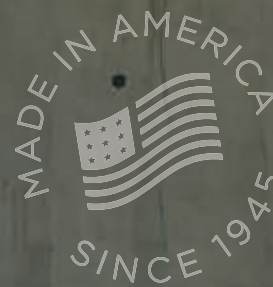


style

PREVIEW





THE SHERRILL WAY.
The process of hand-crafting our furniture
uses traditional methods passed down
through generations alongside the best of
modern techniques.



value

Timeless styling combined with
the finest construction techniques
ensure your Sherrill furnishings
will last for generations.



SHERRILL FURNITURE

CTH | Sherrill Occasional



QUALITY YOU CAN CUSTOMIZE.

Our numerous custom programs enable
you to create your own one-of-a-kind
expression. Whether it's our custom
finishes, tables, chairs, upholstery details
or our incredible hand decorating program,
we empower you to get creative.

TWO BRANDS. ONE VISION.

Sherrill Furniture and Sherrill Occasional are two legacy brands creating the most desired upholstery and wood styles in the world. Our synergy creates an amazing offering of home fashion products.

1796 Chair (H43 W33 D35 in.) Fabric: Sutherland Green, Outback Fabric: Outlander Cream, Applied Cut Tape: Pharump Green, Nails: #1-PN, Finish: Cambridge. **222-460**
Door Cabinet (W90 D20 H38 in.) Custom Finish Combination.
966-040 Twist Leg Cocktail Table (Dia. 36 H17 in.) Finish: Polished Nickel with Black Turnsole Top. **2134 Sofa** (H35 W75 D42 in.) Fabric: Pharump Green, Contrasting Throw Pillows Fabric: Sutherland Green.

DC113 Left Arm Corner Sofa (H37 W105 D25 in.) **DC102 Right Arm Loveseat** (H37 W65 D25 in.), Fabric: Matty White, Contrasting Pillow Fabric: (2) Gila Aqua, (1) Bushnell Teal, (3) Appeal Aqua), Finish: Antique White, **DC12 Bench** (H22 W27 D21 in.) Fabric: Dazzle Linen, Nails: #1-FN, **217-850 Square Cocktail Table** (W44 D44 H20 in.), Finish: J5 Slate





SELECT FINISHES



Antique Walnut



Slate: J5

CORRELATING FABRICS



Matty White



Gila Aqua



Bushnell Teal



Appeal Aqua

THE NAPLES COLLECTION



Classic four door cabinet with inset faux shagreen doors, three adjustable shelves and a tray drawer with silverware liner.

Functional in a dining room or an entertainment area. The framed-in shagreen panels are appointed with a handsome medallion pull.

222-460 Buffet 🇺🇸 (W90 D20 D38 in.) No Distressing. Shown in -00 Combination Finish: #79 Stone with Ivory Shagreen Doors. Naples Collection.



Sherrill Occasional

custom table

PROGRAM



RECTANGULAR

The rectangular made to measure program allows you to choose table type, top and leg combination, table size to the inch, grain direction, custom finishes and striping or hand decoration.



70D-3838-LL Game Table (L38 W38 H30 in.)
Finish: -LL Decorative Finish, 43 Antique Red with Scroll Design on Apron in Black



70A-6626-00 Console Table (L66 W26 H34 in.)
Combination Finish: Top: 55 Soho, Base: 18 Basic Black



80B-1818-CM Bunching Cocktail Table
(L18 W18 H19 in.) Finish: Color Match

Put the power of CTH|Sherrill Occasional to work for your ideas! Each made-to-measure table is custom-created, hand-crafted and finished in Hickory, North Carolina.



ROUND

Our round table custom program allows you to choose table type, leg style, diameter, custom finishes and striping or hand decoration.



80P-42D-00 Cocktail Table (Dia 42 H19 in.)
Combination Finish: 34 Washed Linen with Platinum Striping



70Q-42D-39 Dining Table (Dia 42 H30 in.)
Finish: 39 Black Nickel



70P-30D-00 Center Table (Dia 30 H30 in.)
Combination Finish: C7 Cashmere with Gold Striping





H726S Snug Sofa (W80 D38 H37 in.) Fabric: Tallageda Natural, Pillows: Overbrook Blue, **H123C Mondrian Chair** (W30 D33 H33 in.) Fabric: Site Oatmeal, Pillows: Cimino Tan, Finish: Washed Linen, **MH10314-22 Paris Cocktail Table** (W44 D22 H17 in.) Finish: Handpainted Light Cream Vellum, **MH18031 Fowler Console** (W75 D27 H33 in.) Finish: C5 Basalt

SELECT FINISHES



Washed Linen: 34



Basalt: C5

CORRELATING FABRICS



Talladega Natural



Site Oatmeal



Overbrook Blue



Cimino Tan

Mr. + Mrs. Howard

for SHERRILL FURNITURE

This extraordinary collection from designers Jim and Phoebe Howard, Mr. & Mrs. Howard for Sherrill Furniture encapsulates beautiful design using a fresh blend of traditional and current sensibilities grounded in timeless design theory. Including upholstery and casegoods, it is the quality you expect from Sherrill with the styles you know and love from the Howards.



DESIGNERS PHOEBE & JIM HOWARD



H325AC Basque Chair (W21 D23 H34 in.) Fabric: Edmond Grey, Finish: Oatmeal,
MH20010-90 Dunand Dining Table (W92 D45 H30 in.) Finish: Natural Oak,
MH20021-90 Letitia Buffet (W80 D20 H6 in.) Finish: Natural Oak



H706C Parker Chair (W34 D38 H37 in.)
 Fabric: Bursa Gray, Nails: #2-P, Finish: Soho



MH20525 Vice Versa King Bed (W81 D87.75 H62 in.)
 Finish: Modern Walnut

Mr. + Mrs. Howard
 for SHERRILL FURNITURE



MH21521-90 Michel King Bed (W79 D89.75 H63 in.)
 Finish: Ivory Vellum with Mahogany Trim and Feet

H327AC Pablo Chair (W20 D25 H39 in.) Fabric: Lillard Natural, **MH10010**
Hourglass Dining Table (Dia: 54 H 30 in.) Finish: A1 Modern Walnut, **MH17360**
Silhouette Dresser (W56 D21 H32 in.) Finish: 68 Walnut Black, **MH16341-90**
Jeffrey Octagonal Mirror (W50 D2 H60 in.) Antique Mirror Glass





Sherrill 1660 Wing Chair (H50 W30 D38 in.) Fabric: Rococo Blue, Hardcastle Natural, Finish: Slate, **963-151 Door Chest**, (W47 D20 H38 in.) Finish: Natural Linen finish with matching paint and nickel nail heads, **966-061 Gypsos Cocktail Table** (W54 D28 H18 in.) Finish: Champagne Gold with Polished Gypsum Top, **Sherrill 3250 Sofa** (H34 W87 D38 in.) Fabric: Tyrone Blue, Nails: #1P, Finish: Slate, Throw pillows: (2) Ransom Orange and (2) Rococo Blue.



SELECT FINISHES

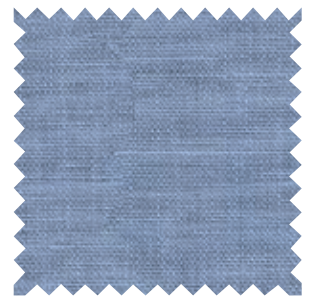


Slate

CORRELATING FABRICS



Rococo Blue



Tyrone Blue



Hardcastle Natural



Ransom Orange

MATERIAL MIX

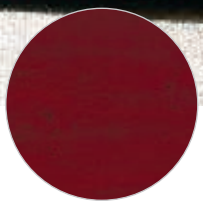



The Gypsos Cocktail Table integrates a beautiful artisan crafted jewelry-like metal base in a champagne metal finish with a clear glass lower shelf and a generous polished gypsum top.






custom finishes



Select  is your assurance that CTH/ Sherrill Occasional furniture is hand-crafted in one of our North Carolina facilities, by skilled craftsmen with years of experience working with only the finest materials. All Select furniture can be ordered in any of our over 40 Custom Finishes, including Color Match.

382-997-LL Box on Stand  (W42 D19 H34 in.)
 Finish: Hand Painted Quatre Foil Pattern on Drawer Fronts in Platinum over Custom #39 Black Nickel with Platinum Accent Striping




Sherrill Design Your Own 2 Series: 2T11RBLD Chair, T-Cushion, Rolled Arm, Box Loose Back, Dressmaker Skirt, Fabric: Hocksett Red, **2F82RBLD Sofa**, Front Arm Style, 82-inch Sofa, Rolled Arm, Boxed Loose Backs, Dressmaker Skirt, Fabric: Newington Beige, Throw Pillows Fabric: Cornish Red, **2F11NBL5 Chair**, Front Arm Style, Nailed Arm, Box Loose Back, Skirt, Fabric: Cornish Red, **967-121 Rue Round Cocktail Table** (Dia: 44 H18 in.) Finish: Zambrano Veneer, **971-990 Chest** (W32 D18 H32 in.) Finish: Dark Brown Rubbed




CTH | Sherrill Occasional



80D-4228-LL Hand Decorated Custom Size Cocktail Table  (L42 D28 H19 in.) Finish: #87 Platinum with 28 Sugar Top and Hand Painted Koil Decoration in Platinum

HAND DECORATION



70D-3838-LL Hand Decorated Custom Game Table  (L38 D38 H30 in.) Finish: #43 Antique Red with Scroll Design on Apron in Black



Picture Frame Stripe



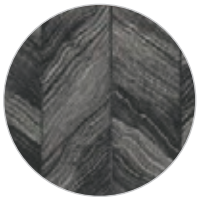
Koil



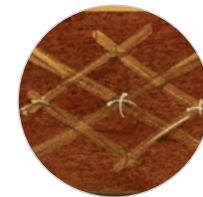
Quatre Foil



Greek Key



Chevron

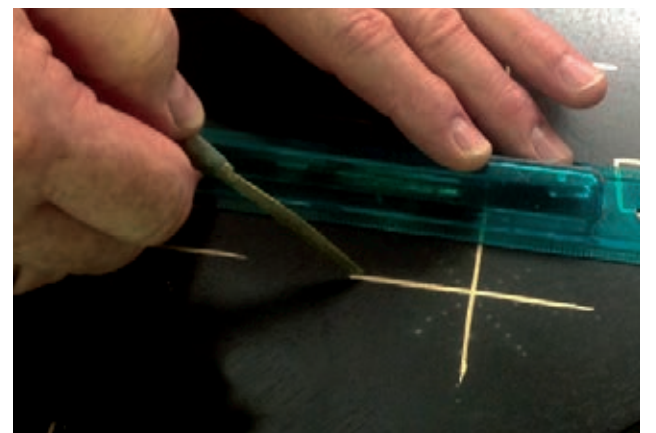


Bamboo



Scroll

Customize your Sherrill Occasional furniture by adding a personalized hand decoration to any case piece with custom finish options. These embellishments are designed and handpainted by our American artisans. No stencils, no machines; every piece is a one of kind masterpiece, designed by you.



DC401 Chairs (H35 W33 D39 in.) Fabric: Sunbrella - S-Express Cloud, Nails: #2-P, Finish: Brown Mahogany, **966-009 Carlyle End Tables** (W25 D25 H25 in.) Finish: Platinum Leaf with Antico Marble, **DC590 Sofa** (H34 W92 D22 in.) Fabric: Sunbrella - S-Posh Salt, Pillows: Myth Peach, Nails: #1P Platinum Spaced, Finish: Brown Mahogany, **966-008 Carlyle Cocktail Table** (W62 D30 H19 in.) Finish: Platinum Leaf with Antico Marble, **DC2 Ottoman** (H20 W24 D21 in.) Fabric: Lumina Ivory, Nails: #2-P, Finish: Winter White





SELECT FINISHES



Brown Mahogany



Winter White

CORRELATING FABRICS



Sunbrella - Posh Salt



Sunbrella - Express Cloud



Lumina Ivory



Myth Peach

SB **SUSAN BAY**
for SHERRILL FURNITURE

I design in the moment for what will survive in the future; classic, but changing traditional furniture that will have lasting value for the places and time in which we live.



AWARD-WINNING DESIGNER AND NATIONALLY RECOGNIZED HOME FURNISHINGS RETAILER, SUSAN BAY.

9600/9700

design your own SERIES

Creating your own custom upholstery
has never been easier than with the
Sherrill 96/97 Design Your Own Series.



Select back style
from 6 options

Select depth of
38 or 41 inches

Select arm style
from 12 options

Sherrill 1123 Carved Chair (H43 W28 D29 in.) Fabric: Killingly Putty, Finish: Stone, **96LS-NFLT Left Arm Sofa** (H35 W79 D38 in.) **96RN-NFLT Right Arm Corner Sofa** (H35 W94 D38 in.) Fabric: Branford Putty, Throw Pillow Fabric: Banks Tangelo, Banks Zucchini, Finish: Brown Mahogany, **963-152 Cocktail Table** (Dia: 42 H19 in.) Finish: Platinum Metal Base

HOW IT WORKS

Creating your own custom upholstery with the Sherrill 96/97 Design Your Own Series. Create your perfect chair, chair & half, sofa, loveseat and sectional by selecting your:

- 1) depth of 38 or 41 inches
- 2) frame style from over 30 choices
- 3) arm from 12 options
- 4) back from 6 options
- 5) base from 9 options

Of course you can select from any of the Custom Line finishes and Sherrill's amazing selection of fabrics.



9723-NFLH SOFA

Options Shown:
Arm: NF-Narrow Track Front
Back: L-Lawson
Base: H-High Tapered



9623-PSD SOFA

Options Shown:
Arm: P-Pleated
Back: S-Semi Attached Knife Edge
Base: D-Dressmaker



9734-EFKB SOFA

Options Shown:
Arm: EF-English Front
Back: K-Knife (Loose)
Base: B-Bun



Select frame
style from over
30 choices

Select base style
from 9 options

Sherrill 1315 Chair (H33 W28 D31 in.)
Fabric: Sunbrella - Crosshatch Fog,
Finish: Hemp, **Sherrill 1926 Sofa** (H38
W85 D34 in.) Fabric: Marino Taupe,
Pillows: Double Brush Edge Fringe Silver,
Nails: #1P, **965-885 Eclipse Cocktail
Table** (W50 D28 H18 in.) Finish: Platinum
Leaf with Onyx Top, **965-887 Eclipse
End Tables** (W24 D24 H24 in.) Finish:
Platinum Leaf with Onyx Top, **960-203W
Bibliotheque** (W87 D20 H94 in.) Finish:
Malabar, **Sherrill 1427 Chair** (H38 W31
D34 in.) Fabric: Rayna Taupe, Nails: #1P,
Sherrill 6047 Ottoman (Dia.34 H17 in.)
Fabric: Tame Taupe, Nails: #1P





SELECT FINISHES

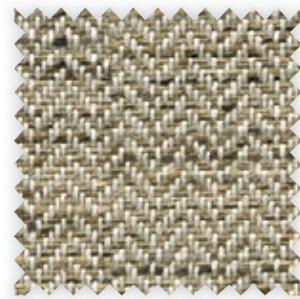


Hemp

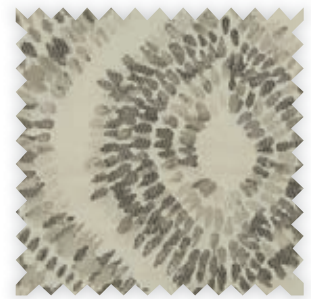


Malabar C3

CORRELATING FABRICS



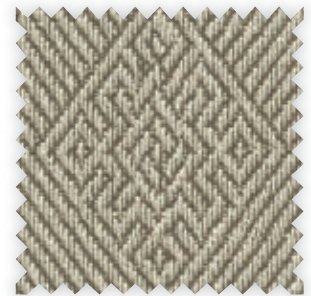
Marino Taupe



Rayna Taupe



Sunbrella - Crosshatch Fog



Tame Taupe

NAIL HEAD TRIM



The perfect way to accent your Sherrill frame, nail head trim options range from Vintage to Natural to Polished nickel. With an assortment of sizes, finishes and spacing to choose from it's easy to create a unique look. Each nail is hand-applied by the proudest craftspeople



SELECT FINISHES



Antique Walnut



Greystone

CORRELATING FABRICS



Carthage Taupe



Walden Taupe



McPerson Oatmeal



Garner Cream

DISTINCTIVE TOPS

An elegant and simple design with a dramatic stone top best relates the Acoriris Collection cocktail table. Artisan crafted metal base in a bronze finish with tapered legs and a sleek stretcher and an Acoriris, or rainbow marble, top.



6049 Ottoman (H19 W41 D41 in.) Fabric: Carthage Taupe. Nails: #1-N and #4-N, 1600 Wing Chair (H44 W31 D36 in.) Fabric: Walden Taupe, Nails: #1-N, Finish: Antique Walnut, 3421½ Sofa (H40 W80 D39 in.) Fabric: Bonefish Grey, 966-064 Acoriris Cocktail Table (W44 D33 H19 in.), Finish: Bronze with Acoriris Stone Top, 1108 Chair (H38 W30 D35 in.) Fabric: Garner Cream - Outback McPherson Oatmeal, Finish: Greystone





ON THE COVER:

SW1758 Swivel Chair (H35 W36 D39 in.) Fabric: Terrawood Tan,
Contrasting Pillow Fabric: Bushnell Taupe, Nails: #2-BZ, 1433
Ottoman (H17 W36 D21 in.) Fabric: Bushnell Taupe, Finish: Slate

1923 Sofa (H37 W91 D39 in.) Fabric: Outlander Seafoam, Contrasting
Pillows: Fabric (2) Hurtsboro Taupe, (1) Gross Grey, Nails: #3-OX spaced
over applied cut tape: Hurtsboro Seafoam, Finish: Bone, 960-203W
Bibliotheque (W87 D20 H94 in) Finish: A4 Antler Sandblasted
Trifecta Cocktail Table 965-116N



SHERRILL FURNITURE
sherrillfurniture.com



Sherrill Occasional
sherrill-occasional.com